



AN IMPORTANT MESSAGE FROM PUBLIC WORKS:

Once a hurricane warning is issued for our area, garbage, recycling and yard brush pickups will be suspended. Have your landscaping cut back and called in for pick up early in the season.

Other Important Information for Hurricane Emergencies

Martin County Website: www.martin.fl.us

Florida-specific Emergency Information www.floridadisaster.org

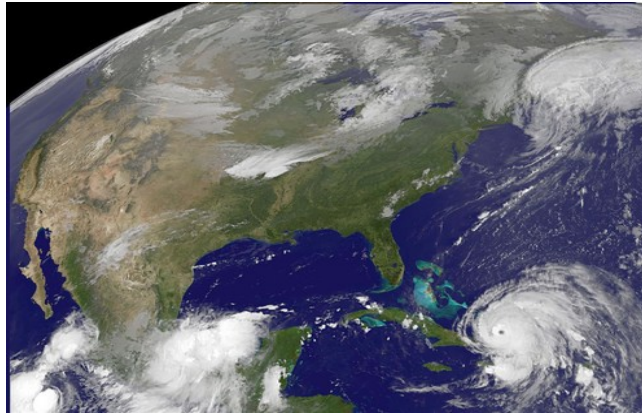
FP&L (to report power outages):
1-800-4-OUTAGE (1-800-468-8243)

AT&T (repair service) 1-877-737-2478

Comcast (local customer service) 419-6051

Jupiter Island Clinic 546-3751

*** The Town gratefully acknowledges the great work of resident Chris Smith on the Town's hurricane team.**



Hurricane Ike approaching The Bahama Islands and Florida, September 2008

These guidelines will help you and your family prepare for the 2009 storm season. You will need them whether you are on the Island or away.

TOWN OF JUPITER ISLAND

Town Hall: 2 Bridge Road
Public Safety: 103 Bunker Hill Road
Hobe Sound, FL 33455

Administration 772-545-0100
Building Dept. 772-545-0150
Public Safety 772-545-0112
- Emergency (fire, medical, etc.) 772-545-0111
Public Works 772-545-0170
SMRU Customer Service 772-546-2511

Admin/Bldg. Fax 772-545-0188
Public Safety Fax 772-546-1960
Public Works Fax 772-546-7918

Website townofjupiterisland.org

TOWN OF JUPITER ISLAND



RESIDENTS' GUIDELINES FOR THE 2009 HURRICANE SEASON



Whether you are on Jupiter Island or away from your Island home, these guidelines should help get you and your home through a storm.

IF YOU ARE AWAY . . .

These services are available for you:

Hurricane Emergency Phone Number: **772-546-0936** — You can call anytime from anywhere, before, during and after a storm to get pre-recorded information on current conditions for Jupiter Island.

Town-Initiated Calling Service — If you have provided your contact phone numbers to the Town, you should receive pre-recorded hurricane updates during a storm emergency period.

Public Safety Public Alert System— The Public Safety alert system provides text or email alerts regarding hurricanes and other local emergencies. To sign up, go to **www.publicalertsystem09.com** and click on "Sign Up for Alerts."

Town Website — Local tropical storm updates and links to other important resources are available on the Town's website: **www.townofjupiterisland.org**

Email Alert System — During an active storm, Town staff will email frequent storm updates and tracking maps. If a storm is forecast to hit this area, these emails will show current wind speed and direction and other important information. Sign up or update your listing now. A minimum of four days (96 hours) is needed to be eligible for this email alert list. To sign up, go to the Town website, click on "Emergency Info" and select "Hurricane Resources," go to "Hurricane Email Updates," select "Click here

to sign up," complete the form, and click "Submit Form." You will receive an email confirmation of your sign-up. To update an existing listing, email Chris Smith, a Jupiter Island resident who works closely with the Town staff at (csmith@tji.martin.fl.us); call Town Hall (772-545-0100) or just sign up again.

Property Inspection Service — Within 48 hours after a storm, each resident's house will be visually inspected by Town staff. Calls will be placed only to those whose homes appear to need immediate attention, but records will be kept available for all Island properties. Residents may call Town Hall (772-545-0100) for an update on the status of their home.

Emergency Contact Service — In case of an emergency, please call Public Safety at 772-545-0112 or 545-0111.

IF YOU ARE HERE . . .

Remember, the Town is in a MANDATORY evacuation zone in the event of a storm.

Personal Evacuation Plan — Make plans for your departure before a storm is near. Stock up on supplies and non-perishable foods your family will need in the event of a storm. Know



Photograph or videotape your home and valuables before you leave

where you will go, map your route, and make sure your car has a full tank of gas. If you have a boat, store or secure it. Before you leave, turn off utilities and unplug non-essential appliances and equipment, secure your home, close storm shutters and store or secure loose items outside such as lawn furniture and grills. Notify Public Safety (545-0112) or Town Hall (545-0100) where and at what phone number you can be reached off-Island. To obtain current travel conditions on hurricane evacuation routes, call 511 .

Portable Disaster Kit — Have your disaster kit ready well before your departure time. Include important papers, medications, extra cash, phone numbers and email addresses, first aid kit, portable radio, flashlights, extra batteries, bedding, clothing, toiletries, paper goods, plastic containers, zipper bags, utensils, manual can opener, books, playing cards, games, and at least a three-day supply of food, water, and beverages.



Turn off power, water and gas before evacuating.

Stay In Touch — Use the Town's hurricane emergency phone number, website, and alert systems for current local information. Listen to radio stations WSTU (1450 AM) or WQCS (88.9 FM) for storm updates. WQCS will broadcast storm information pertaining to Martin County at 9 a.m., 1 p.m. & 6:30 p.m. during a storm emergency.

Emergency Medical Services — All EMT and medical personnel will leave the Island when a mandatory evacuation is ordered and will not return until permitted.



Return — When the "all clear" has been given and access to the Island is permitted, have your photo ID ready on your return to Jupiter Island. Inform Town Hall (545-0100) when you are safely at your home. Stay away from fallen wires, flooded areas, and debris. Do not drink or prepare food with tap water until you are certain it is not contaminated.

If you use a portable generator, follow the manufacturer's instructions and safety recommendations. Use your generator with caution, outside only, and at a safe distance from your home.

**BE PREPARED — STAY READY—
STAY ALERT — STAY SAFE!**